



MOOSH is an approved centre based service under the National Quality Framework (NQF).

Phone/Fax:

6541 3205

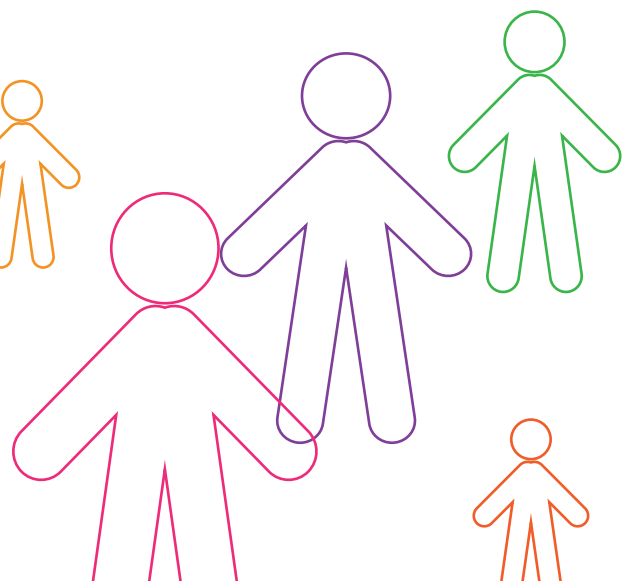
Email:

moosh@uhcs.org.au

Co-ordinator:

Sharon Pittman

The service is auspiced by Upper Hunter Community Services Inc. and is located externally from the QE11 Community Centre.



Don't miss out on free community events through Upper Hunter Community Services

Follow us on Facebook or check out our website for the latest details.

www.uhcs.org.au

www.facebook.com/UHCSInc

QE11 Community Centre
Cnr Bridge & Market St, Muswellbrook
(wheelchair friendly)

Phone: 02 6542 3555

Fax: 6543 1643

Postal address

PO Box 231, Muswellbrook, NSW 2333

QE11 hours

Mon, Tue, Thurs 9.00am-4.00pm

Wed 10.00am-4.00pm

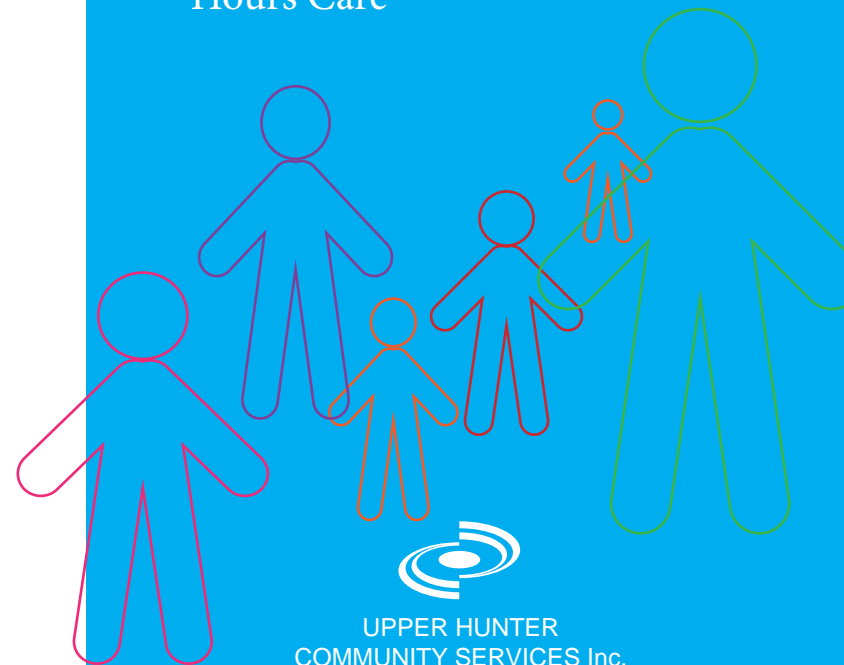
Fri 9.00am-2.00pm



There's always something on at

MOOSH

Muswellbrook Out of School Hours Care



UPPER HUNTER
COMMUNITY SERVICES Inc.

An incorporated association auspicing community projects throughout the Upper Hunter.



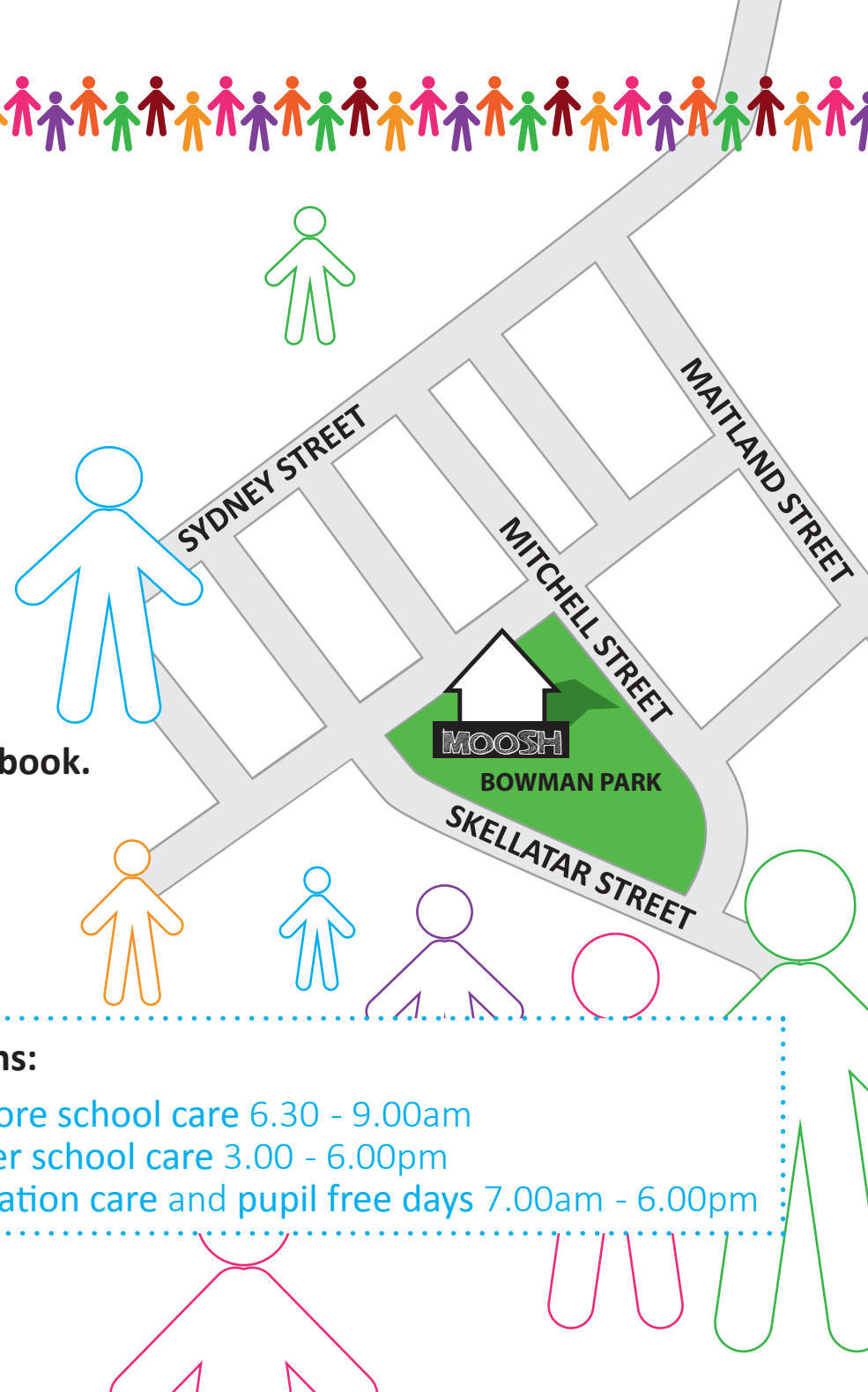
MOOSH

MUSWELLBROOK OUT OF SCHOOL HOURS CARE FOR CHILDREN AGED 5 TO 12

Bowman Park Community Centre, Skellatar Street Muswellbrook.

- Art, craft, drama, dance, sports, cooking, themed days and discos
- Active After School programmes including pool, ping pong, and swimming in term 4
- Time in room with Play Stations
- Free choice activities
- Homework assistance
- Air conditioned/heated
- Healthy eating program
- Casual, permanent bookings
- We also cater for rotating rosters

Phone 6541 3205 for details



Sessions:

- Before school care 6.30 - 9.00am
- After school care 3.00 - 6.00pm
- Vacation care and pupil free days 7.00am - 6.00pm